

GO ANYWHERE™
Managed File Transfer

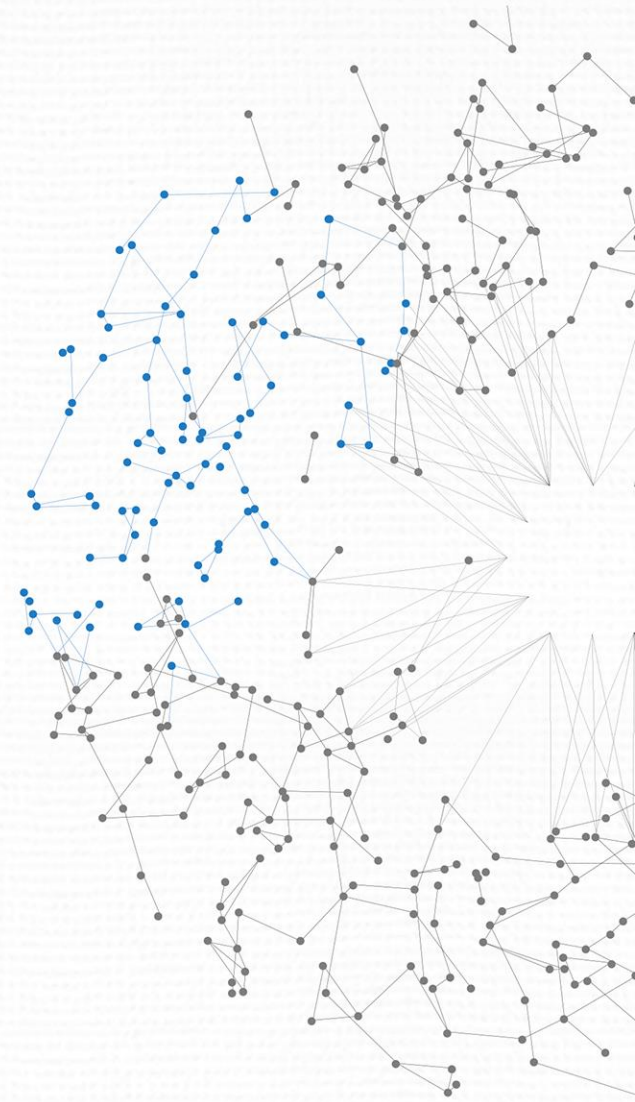
Get the Most Out of GoAnywhere:
Advanced Workflows

www.helpsystems.com



TODAY'S AGENDA

1. What are Advanced Workflows
2. Top Reasons to Use Advanced Workflows
3. Typical Use Case
4. Live Demonstration
5. Question and Answer



UP NEXT

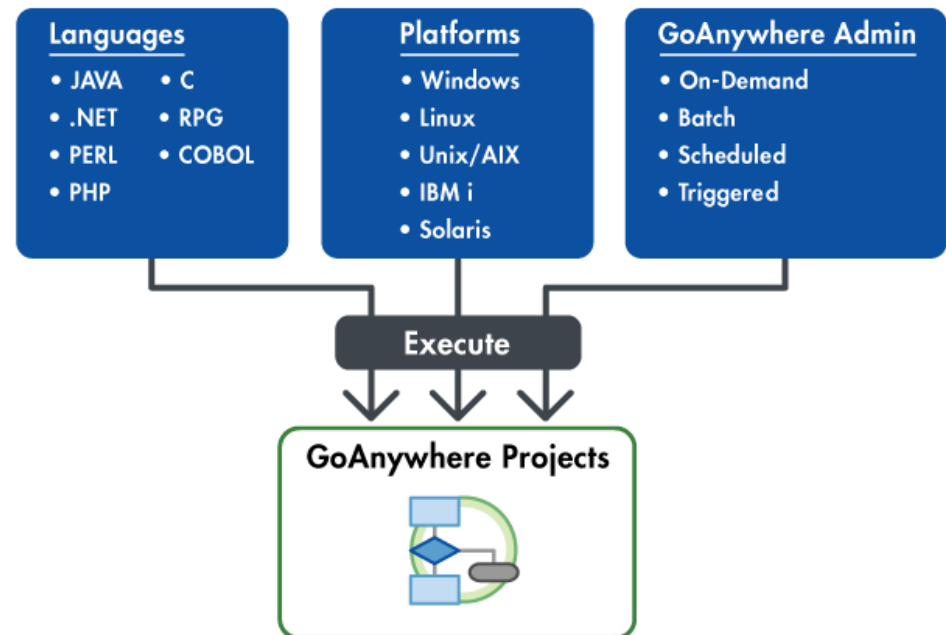


Dan Freeman

CISSP, Senior Solutions Consultant
HelpSystems

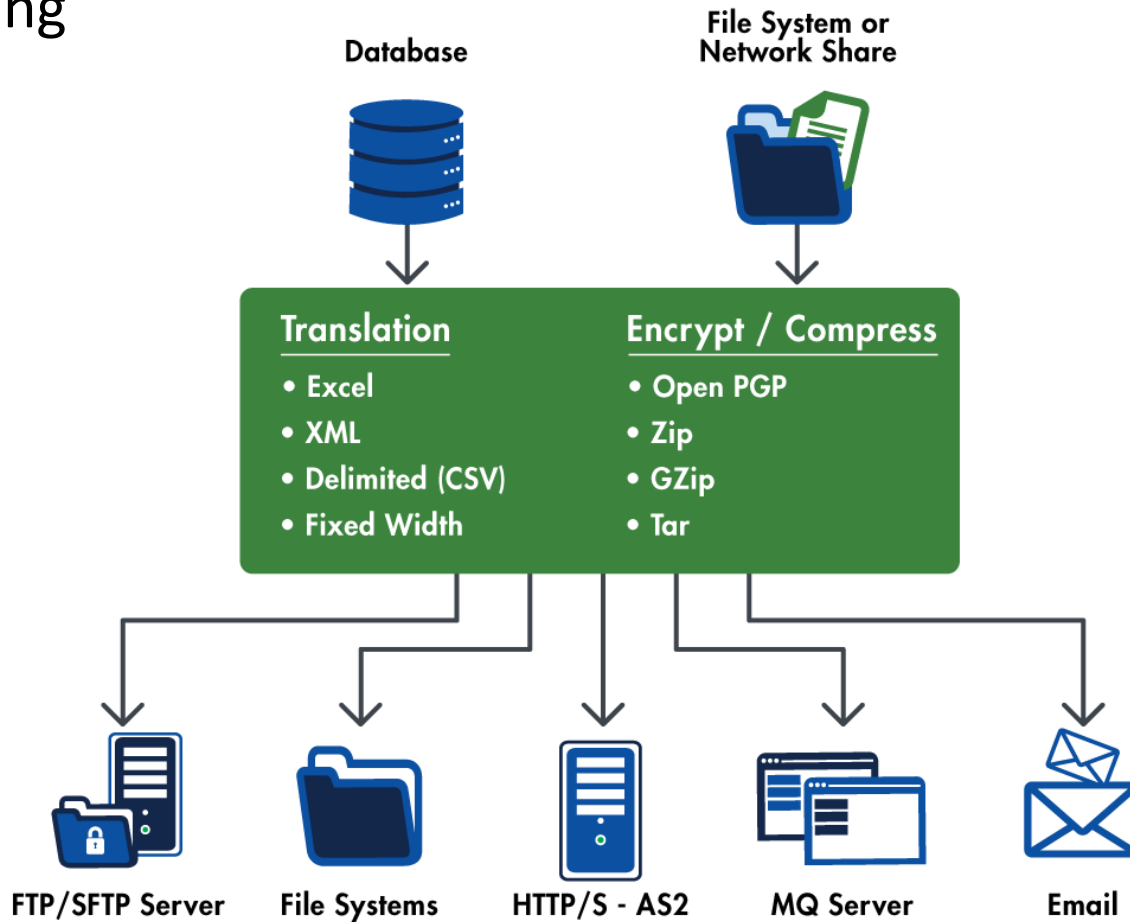
Advanced Workflows

- ▶ Run multi-step workflows to transfer, encrypt and process files
- ▶ Schedule transfers to run at future dates and times
- ▶ Monitor folders for new files
- ▶ Automatically process files
- ▶ Extensive application integration capabilities
- ▶ Problem solver!



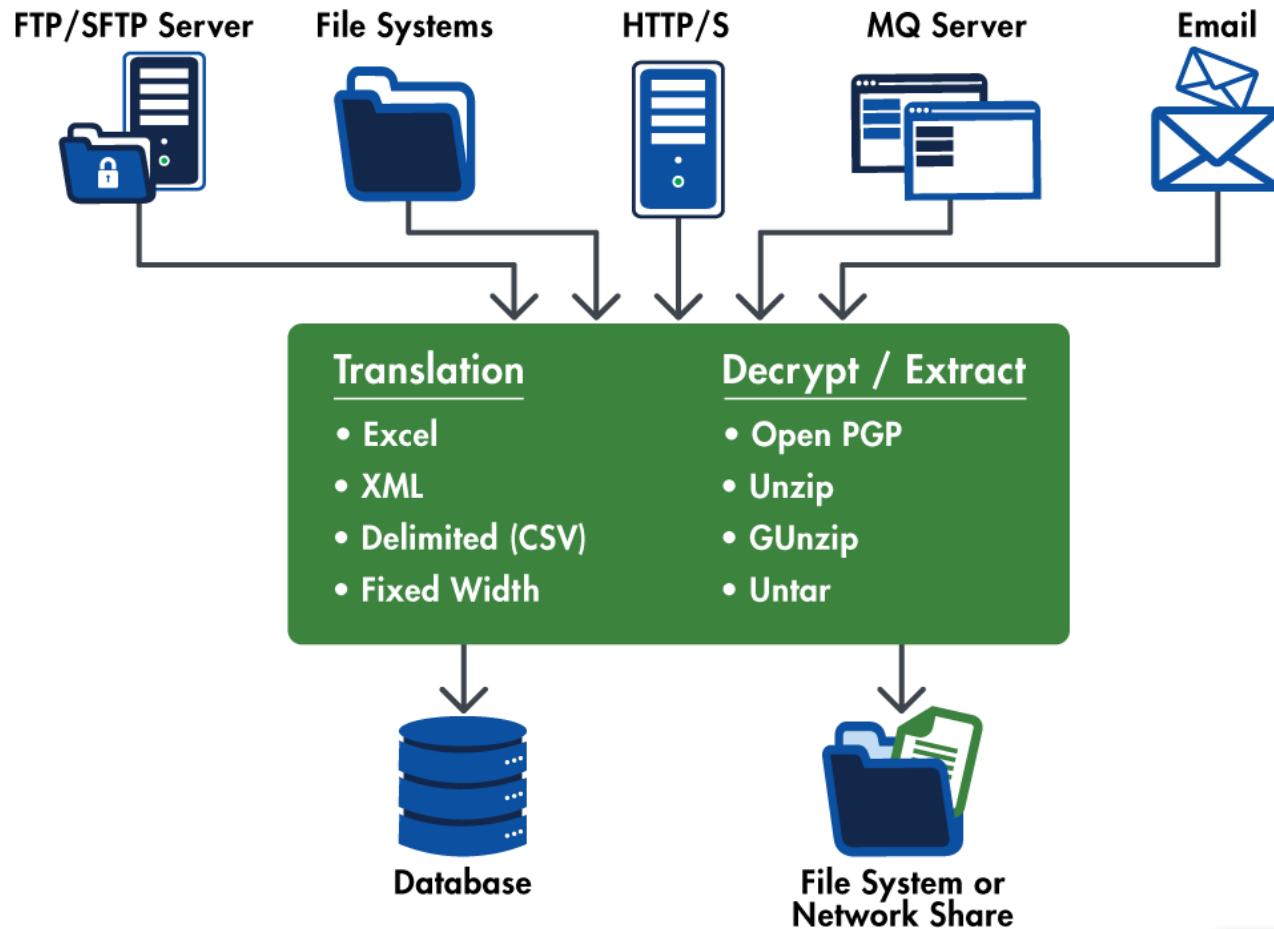
Automated Workflow Examples

▶ Outgoing



Automated Workflow Examples

▶ Incoming



Project Workflow Designer



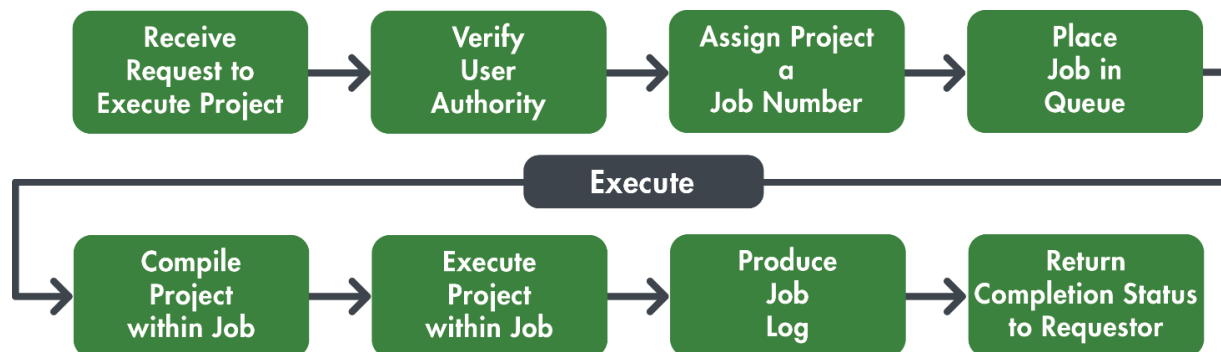
- ▶ Drag-n-Drop Components
- ▶ Over 100 unique Tasks
- ▶ Integrated Debugger
- ▶ No Scripting

The screenshot displays the Project Workflow Designer interface. At the top, there is a toolbar with buttons for Save, Exit, Validate, Execute, Debug, Show XML, and Full Screen. The main workspace is divided into three panels:

- Component Library:** A list of available components such as Compression, Database, SQL, Data Translation, Email & SMS, File System, File Transfer, Integration, Job Control, Call Module, Call Project, Call Remote Project, Call Agent Project, Call Agent Group Project, Delay, If, Else, Exit Module, Exit Project, Raise Error, and Loops.
- Project Outline:** A tree view showing the current workflow structure. The selected task is "Create File List" within a "For-Each Loop" under an "If" condition.
- Create File List Configuration:** A panel for configuring the selected task. It includes fields for Label, File List Variable (set to "remotefilelist"), and Number of Files Found Variable. The File Sets section shows a Base Directory of "resource:sftp://Dan Local laptop SFTP server/receive" and options for Recursive, Sort By, and Sort Order. There are also buttons for "Add File Set" and "Add Filter".
- Variables:** A list of system and user-defined variables, including Output Variables like sessID, localfile, remotefilelist, localfilelist, toname, remotefile, filesfoundLocal, Folder Variables like HelpdeskEmailGroup, and System Variables like system.emptyString, system.java.vendor, system.java.version, system.job.id, system.job.workspace, system.os.arch, system.os.name, system.os.version, system.project.location, system.project.name, system.version, and system.job.error.

Project Execution Flow

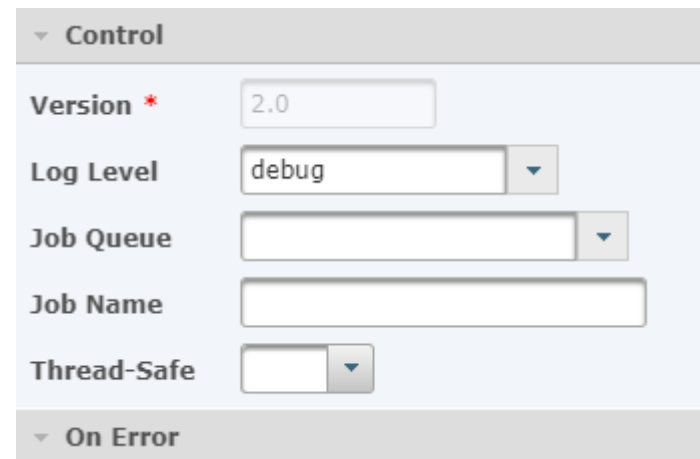
- ▶ Every execution of a Project is considered a “Job”
- ▶ Each Job is assigned its own Job Number and Job Log
- ▶ Starts in a Job Queue
- ▶ Can override Job Queue priority and Execution priority
- ▶ Multi-threading (to allow the concurrent execution of multiple projects)
- ▶ Monitor active Jobs (hold, release, cancel)



Project Logging

(Audit Trails)

- ▶ Job Log per execution of Project
- ▶ Log Level can be defined on a project, module or a task
- ▶ Log Level controls what should be logged:
 - ▶ SILENT
 - ▶ INFO
 - ▶ VERBOSE
 - ▶ DEBUG
- ▶ Search Completed Jobs
 - ▶ Date/time range
 - ▶ User
 - ▶ Project Name
 - ▶ Job Number
 - ▶ Status



The screenshot shows a configuration panel with a 'Control' section. It includes the following fields:

- Version ***: Text input field containing '2.0'
- Log Level**: Dropdown menu with 'debug' selected
- Job Queue**: Dropdown menu (empty)
- Job Name**: Text input field (empty)
- Thread-Safe**: Dropdown menu (empty)

Below the Control section is an 'On Error' section, which is currently collapsed.

Top Reasons to Use Advanced Workflows



- ▶ Automation capabilities with over 100 predefined tasks that can be used as building blocks



- ▶ PGP encrypt and decrypt automation



- ▶ File read and write functionality



- ▶ Auditing capabilities



- ▶ Save on resources



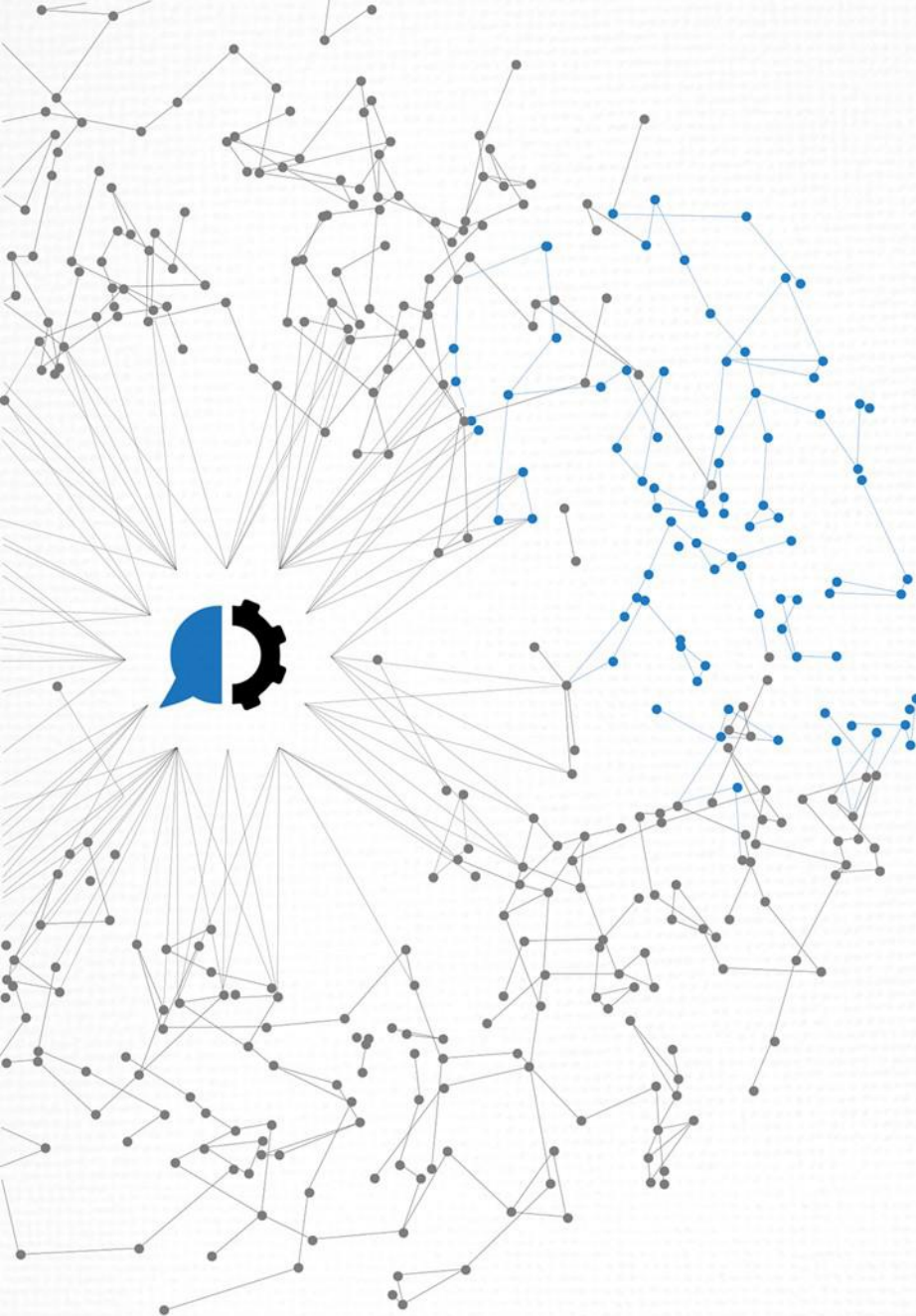
- ▶ Connectivity and integration



- ▶ Eliminate manual/human error

Before and After Example

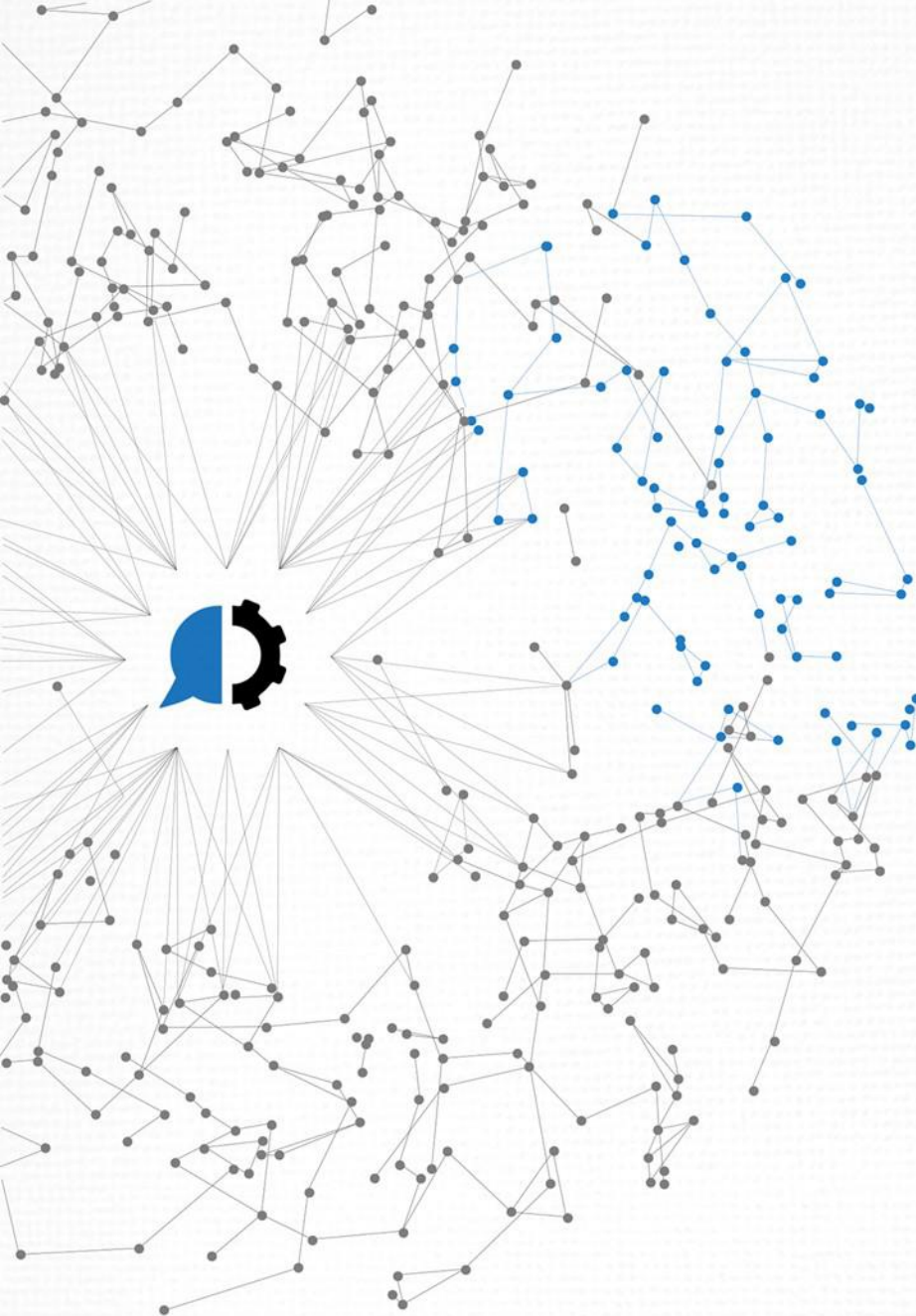
- ▶ Saving inbound/outbound documents for archiving and retention policy purposes
 - ▶ Manually copy file to destination and archive folder
 - ▶ Delete out original staging directory file
 - ▶ Verify and proceed with further processing on destination file
 - ▶ Manually delete out files older than certain time frame
 - ▶ Can get very complex and labor intensive for multiple directories
 - ▶ Manual processes inherently are subject to human error
 - ▶ Not compliant with retention policies
 - ▶ May have too much information that could be 'discoverable'



GO ANYWHERE[™]
Managed File Transfer

Live Demo

www.helpsystems.com



GO ANYWHERE™
Managed File Transfer

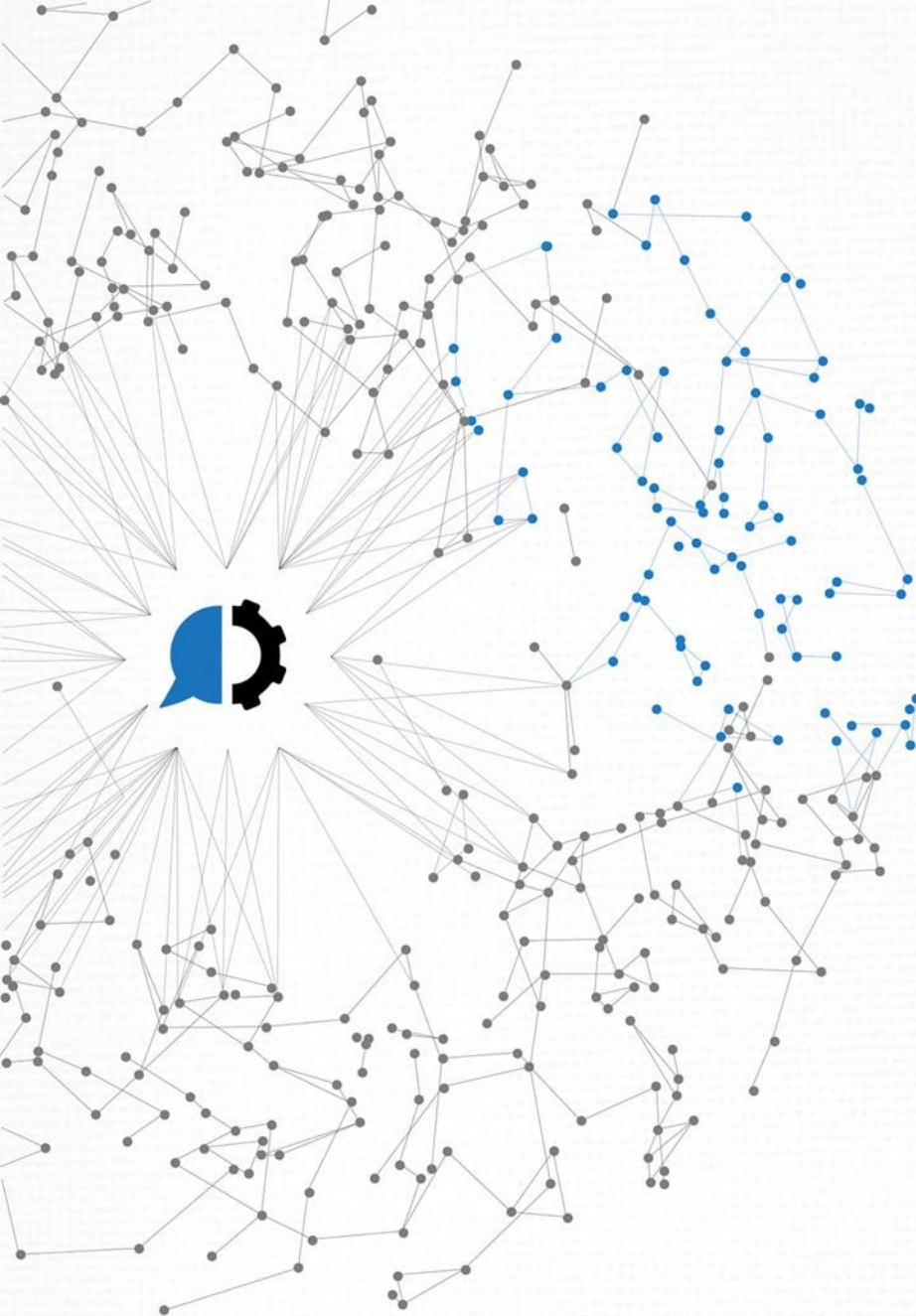
Question & Answer

Upcoming Topics

tiny.cc/2017series



- ▶ **Agents**
September 20th
- ▶ **PCI DSS Security Settings Audit Report**
October 11th
- ▶ **Secure Forms**
November 1st
- ▶ **Azure & Amazon Web Services**
December 6th



GO ANYWHERE™

Managed File Transfer

www.GoAnywhere.com 

sales@goanywhere.com 

Toll-Free 1-800-949-4696 

Direct (402) 944-4242 

www.helpsystems.com