

Network Server Suite

Network Server Suite provides comprehensive monitoring and automation for Windows, AIX/VIOS, and Linux servers and SNMP devices. It was designed to deliver smooth operations without increasing headcount by centralizing the monitoring and management of all network servers.

By integrating Network Server Suite into your IT environment to support existing monitoring tools, it eliminates the need for separate screens to monitor multiple environments or platforms. Pre-defined monitoring templates ensure 24/7 availability of servers, critical processes, and network devices right out of the box. Alerts are sent to the Enterprise Console or as SMS messages to mobile phones or by email.

Manage Multiple Servers from a Single Location

Enterprise Console provides a central view of your entire enterprise, regardless of location and platform. You can easily view messages and alerts generated by any Windows, AIX/VIOS, and Linux servers and reply to messages or close alerts from the central PC console.

Color-coded options help you identify different servers or types of alerts and comprehensive filters allow you to escalate actions, change severity, and forward alerts. Plus, place your IT enterprise at your fingertips with the free Enterprise Console mobile app for Apple and Android devices.

Let's Get Started

Seeing Network Server Suite in action will help you determine how proactive system monitoring can save you time and money. Visit us at www.helpsystems.com/cta/request-live-network-server-suite-demonstration to arrange your demo.

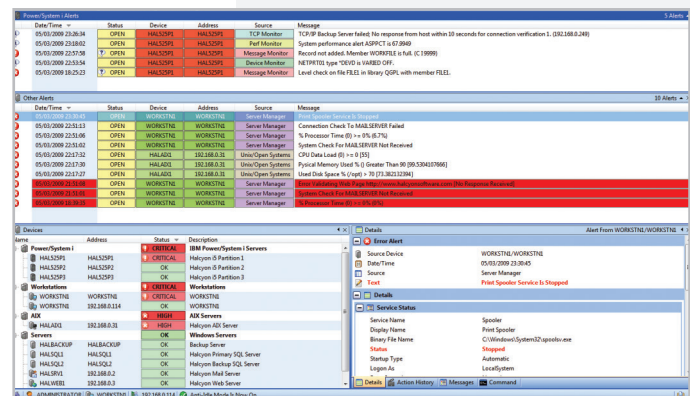
PRODUCT SUMMARY

KEY FEATURES

- Monitor and automate across multi-platform environments
- Deploy in minutes
- Install remotely and upgrade from a central location
- Graphically display current and historical performance data
- Receive notification of critical system performance issues
- Send alerts as SMS or email messages
- View all alerts and thresholds in a single pane of glass
- Automatically start, stop, pause, or resume a service
- Integrate your company's escalation procedures
- Run a batch file or a script

SUPPORT PLATFORMS

- AIX/VIOS
- Linux
- Linux on Power
- Windows



Enterprise Console provides a real-time focal point for all your multi-platform monitoring.

Network Server Suite Components

Key Monitoring Features	Enterprise Console	Windows	AIX/VIOS	Linux & Linux on Power
Ensure mail is working		✓		
Make sure internet access is available		✓		
Make sure company website/internet is available		✓		
Check for errors on firewall		✓		
Monitor of key applications in depth (e.g., email outbound queue)		✓		
Watch for files increasing in size too quickly		✓		
Do a system health check, including performance snapshot and load average			✓	
Keep an eye on critical errors from your "errpt"			✓	
Look for logical volume groups or drives reaching customizable thresholds			✓	✓
Monitor when critical subsystems are active or inoperative at certain times			✓	✓
Track changes to critical files			✓	✓
See that critical subsystems are active or inoperative at certain times			✓	✓
Manage disk space daily checklist		✓	✓	✓
Monitor CPU/processor usage		✓	✓	✓
See that critical services are active (e.g., anti-virus software, email, etc.)		✓	✓	✓
Check that backups are completed		✓	✓	✓
Monitor for errors in logs		✓	✓	✓
Check that access hubs, switches, and routers are working		✓	✓	✓
See that anti-virus definitions are updated		✓	✓	✓
Check that applications are available		✓	✓	✓
Check that FTP, telnet, and news servers are available		✓	✓	✓
Report on performance and SLAs		✓	✓	✓
Check that critical processes are active or inoperative at certain times		✓	✓	✓
Use pre-defined monitoring templates		✓	✓	✓
Gather data from multiple platforms for centralized viewing and management	✓			
Receive, acknowledge, and/or answer messages and alerts from any server from a single location	✓			
Display full details regarding a received message or alert in a separate panel	✓			
Integrate with third-party help desk systems	✓			
Set up filters and escalating actions to create additional decision-making routines	✓			
Apply different icons and color schemes to identify individual systems and applications	✓			
Add comments when actions are taken	✓			
View previous replies and actions to old messages	✓			

About HelpSystems

Organizations around the world rely on HelpSystems to make IT lives easier and keep business running smoothly. Our software and services monitor and automate processes, encrypt and secure data, and provide easy access to the information people need.